



PURSuing A REVIVAL IN GOLD

Beartrack-Arnett Project Lemhi County, Idaho

AEMA CONVENTION

December 8, 2023

revival-gold.com

TSX-V: RVG

OTCQX: RVLGF



Cautionary Notes

This document has been prepared by Revival Gold Inc. ("Revival Gold" or, the "Company") for evaluation of the Company by the recipient. The information contained in this presentation is derived from estimates made by the Company, information that has been provided to the Company by other parties, and otherwise publicly available information concerning the Company and does not purport to be all-inclusive or to contain all the information that an investor may desire to have in evaluating whether or not to make an investment in the Company. It is not intended to be relied upon as advice to investors or potential investors and does not take into account the investment objectives, financial situation or needs of any particular investor. No person has been authorized to give any information or make any representations other than those contained in this presentation and, if given and/or made, such information or representations must not be relied upon as having been so authorized. The information and opinions contained in this presentation are provided as at the date of this presentation. This presentation may not be reproduced, further distributed or published in whole or in part by any other person.

The technical and scientific information in this document was reviewed and approved by John Meyer, P.Eng., VP Engineering & Development, Revival Gold Inc., and Steven T. Priesmeyer, C.P.G., VP Exploration, Revival Gold Inc., both Qualified Persons under National Instrument 43-101 – Standards of Disclosure for Mineral Projects ("National Instrument 43-101"). See "Preliminary Feasibility Study NI 43-101 Technical Report on the Beartrack-Arnett Heap Leach Project, Lemhi county, Idaho, USA" dated August 2nd, 2023 and prepared by Kappes, Cassidy & Associates, IMC, KCH and WSP in accordance with National Instrument 43-101 for further details. Neither the TSX Venture Exchange nor its Regulation Services Provider (as that term is defined in the policies of the TSX Venture Exchange) accepts responsibility for the adequacy or accuracy of this presentation.

Forward Looking Statement

This presentation includes certain "forward-looking information" within the meaning of Canadian securities legislation and "forward-looking statements" within the meaning of U.S. securities legislation (collectively "forward-looking statements"). Forward-looking statements are not comprised of historical facts. Forward-looking statements include estimates and statements that describe the Company's future plans, objectives or goals, including words to the effect that the Company or management expects a stated condition or result to occur. Forward-looking statements may be identified by such terms as "believes", "anticipates", "expects", "estimates", "may", "could", "would", "will", or "plan". Since forward-looking statements are based on assumptions and address future events and conditions, by their very nature they involve inherent risks and uncertainties. Although these statements are based on information currently available to the Company, the Company provides no assurance that actual results will meet management's expectations. Risks, uncertainties, and other factors involved with forward-looking statements could cause actual events, results, performance, prospects, and opportunities to differ materially from those expressed or implied by such forward-looking statements. Forward-looking statements in this document include, but are not limited to, the Company's objectives, goals and future plans, and statements of intent, the implications of exploration results, mineral resource/reserve estimates and the economic analysis thereof, exploration and mine development plans, timing of the commencement of operations, estimates of market conditions, and statements regarding the results of the pre-feasibility study, including the anticipated capital and operating costs, sustaining costs, net present value, internal rate of return, payback period, process capacity, average annual metal production, average process recoveries, concession renewal, permitting of the project, anticipated mining and processing methods, proposed pre-feasibility study production schedule and metal production profile, anticipated construction period, anticipated mine life, expected recoveries and grades, anticipated production rates, infrastructure, social and environmental impact studies, availability of labour, tax rates and commodity prices that would support development of the Project. Factors that could cause actual results to differ materially from such forward-looking statements include, but are not limited to failure to identify mineral resources, failure to convert estimated mineral resources to reserves, the inability to maintain the modelling and assumptions upon which the interpretation of results are based after further testing, the inability to complete a feasibility study which recommends a production decision, the preliminary nature of metallurgical test results, delays in obtaining or failures to obtain required governmental, environmental or other project approvals, changes in regulatory requirements, political and social risks, uncertainties relating to the availability and costs of financing needed in the future, uncertainties or challenges related to mineral title in the Company's projects, changes in equity markets, inflation, changes in exchange rates, fluctuations in commodity and in particular gold prices, delays in the development of projects, capital, operating and reclamation costs varying significantly from estimates, the continued availability of capital, accidents and labour disputes, and the other risks involved in the mineral exploration and development industry, an inability to raise additional funding, the manner the Company uses its cash or the proceeds of an offering of the Company's securities, an inability to predict and counteract the effects of COVID-19 on the business of the Company, including but not limited to the effects of COVID-19 on the price of commodities, capital market conditions, restriction on labour and international travel and supply chains, future climatic conditions, the discovery of new, large, low-cost mineral deposits, the general level of global economic activity, disasters or environmental or climatic events which affect the infrastructure on which the project is dependent, and those risks set out in the Company's public documents filed on SEDAR+. Although the Company believes that the assumptions and factors used in preparing the forward-looking statements in this news release are reasonable, undue reliance should not be placed on such information, which only applies as of the date of this news release, and no assurance can be given that such events will occur in the disclosed time frames or at all. Specific reference is made to the most recent Annual Information Form filed on SEDAR+ for a more detailed discussion of some of the factors underlying forward-looking statements and the risks that may affect the Company's ability to achieve the expectations set forth in the forward-looking statements contained in this presentation. The Company disclaims any intention or obligation to update or revise any forward-looking statements, whether as a result of new information, future events or otherwise, other than as required by law.

Cautionary Note to United States Investors Concerning Estimates of Measured, Indicated and Inferred Resources

Mineral resources presented in this presentation are disclosed in accordance with National Instrument 43-101, as required by Canadian securities regulatory authorities. Canadian standards differ significantly from the standards in the Securities Exchange Commission ("SEC") Industry Guide 7 ("Industry Guide 7"), which was the historical property disclosure requirements for mining registrants. Effective February 25, 2019, the SEC adopted new mining disclosure rules under 5 subpart 1300 of Regulation S-K of the United States Securities Act of 1933, as amended (the "SEC Modernization Rules"), with compliance required for the first fiscal year beginning on or after January 1, 2021. The SEC Modernization Rules replace SEC Industry Guide 7. As a result of the adoption of the SEC Modernization Rules, the SEC now recognizes estimates of "measured mineral resources", "indicated mineral resources" and "inferred mineral resources". In addition, the SEC has amended its definitions of "proven mineral reserves" and "probable mineral reserves" to be substantially similar to corresponding definitions under the CIM Standards. During the period leading up to the compliance date of the SEC Modernization Rules, information regarding mineral resources or reserves contained or referenced in this investor presentation may not be comparable to similar information made public by companies that report according to U.S. standards. While the SEC Modernization Rules are purported to be "substantially similar" to the CIM Standards, readers are cautioned that there are differences between the SEC Modernization Rules and the CIM Standards. Accordingly, there is no assurance any mineral reserves or mineral resources that the Corporation may report as "proven mineral reserves", "probable mineral reserves", "measured mineral resources", "indicated mineral resources" and "inferred mineral resources" under NI 43-101 would be the same had the Corporation prepared the reserve or resource estimates under the standards adopted under the SEC Modernization Rules.

Disclaimer to United States Investors

The securities of the Company have not been registered under the United States Securities Act of 1933, as amended (the "U.S. Securities Act"), or any state securities laws and may not be offered or sold within the United States or to U.S. Persons unless registered under the U.S. Securities Act and applicable state securities laws or an exemption from such registration is available.



REVIVAL GOLD INC.

A *growth* company in gold

- Advancing the **Beartrack-Arnett Gold Project** located in Idaho, USA¹
 - Largest past-producing gold mine in the state
 - **1st phase heap leach restart** – strong PFS economics
 - **2nd phase U/G opportunity** – progressing concept
 - Multi-million-ounce gold project; ongoing exploration
- **Veteran gold team** - track records of success with:



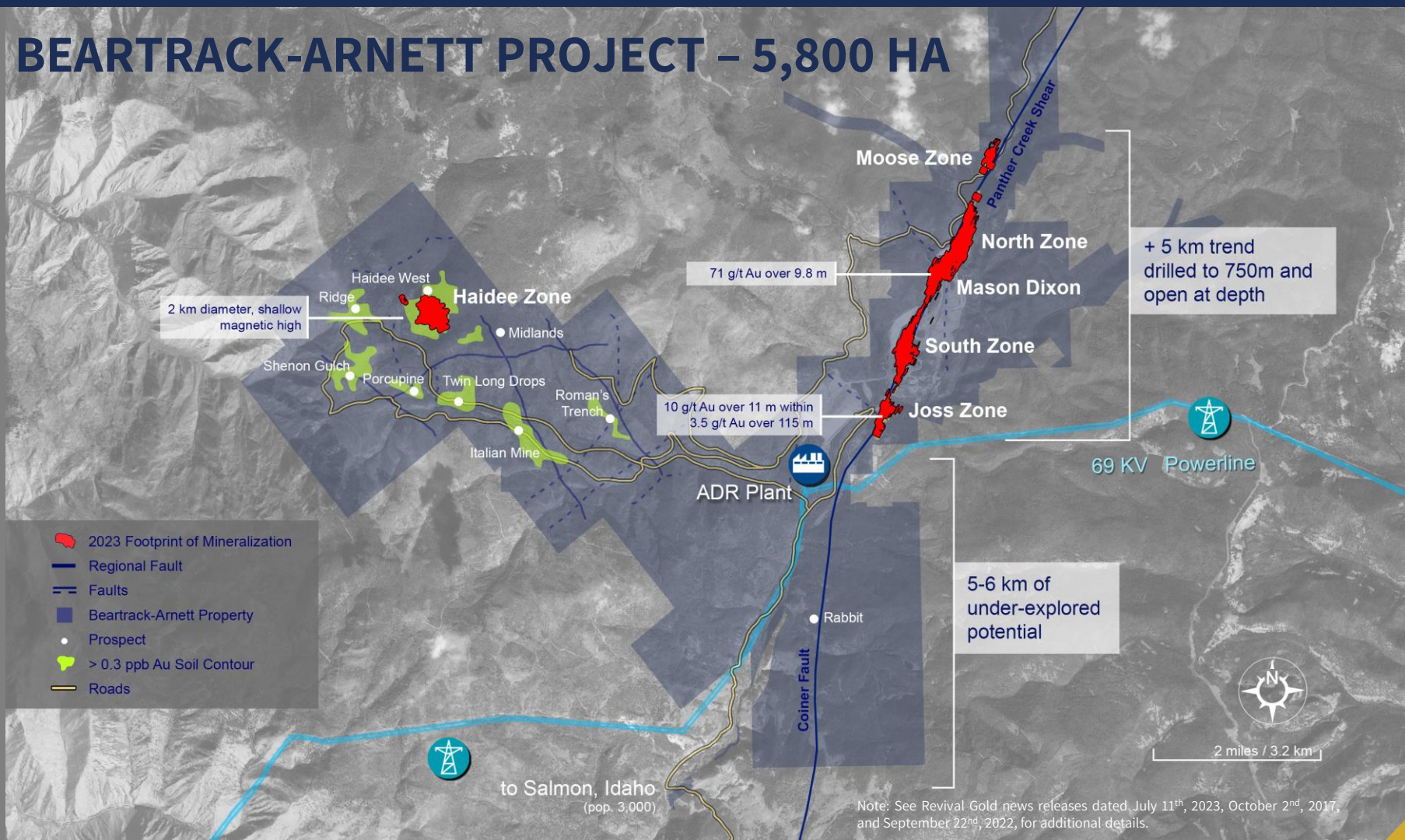
POSITIONED IN NORTH AMERICA

- **2nd largest** gold-producing region in the world¹
- **Idaho is ranked among top jurisdictions** in the world for policy by the Fraser Institute²
- **30 M ounce state endowment** of undeveloped gold deposits³

Note: ¹World Gold Council ; ²Fraser Institute 2022 Survey of Policy Perception Index; ³DigiGeoData data for Idaho as at December 31st, 2020, and Company information.



BEARTRACK-ARNETT PROJECT – 5,800 HA



Note: See Revival Gold news releases dated July 11th, 2023, October 2nd, 2017, and September 22nd, 2022, for additional details.

BEARTRACK-ARNETT PROJECT

- Gold discovered in the Mackinaw District in 1860's; estimated district placer production: **400,000 to 500,000 ozs of gold**
- Meridian Gold produced **600,000 ozs of gold** from an open pit, heap leach operation 1994-2002¹
- Current land position assembled by **Revival in 2017-18**
- 2023 PFS² Beartrack-Arnett resource:
 - **2.42 million ozs @ 0.87g/t Au M & I**
 - **2.19 million ozs @ 1.34 g/t Au Inferred**
- **Minimum** District gold endowment - **5.5 MM ozs of gold**
- **Underground** Inferred Resource²:
 - 6.7 MM tonnes @ 4.05 g/t Au containing 877 k oz Au
 - Horizontal width ranges from 3 m to 25 m

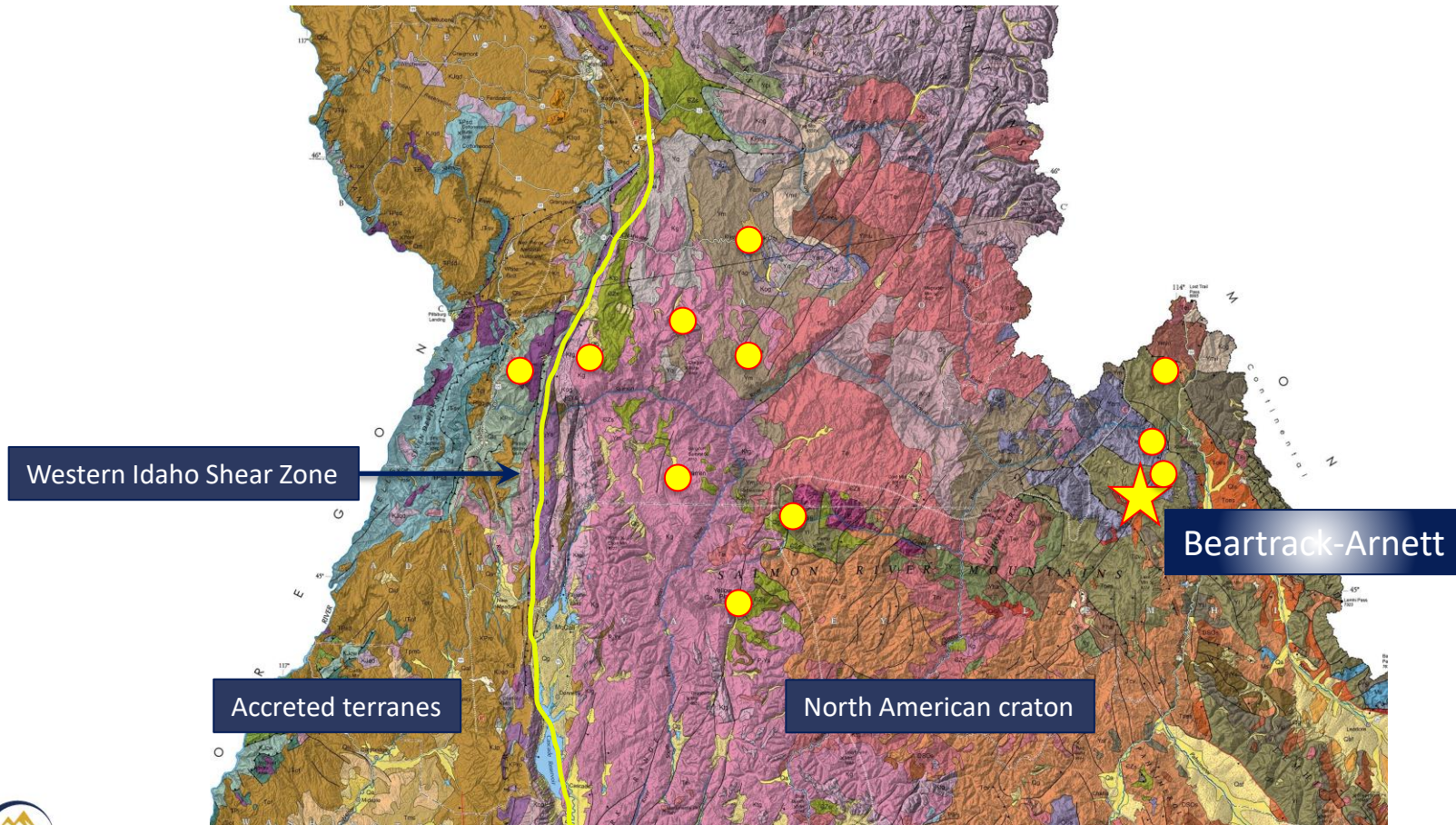


REGIONAL GEOLOGY



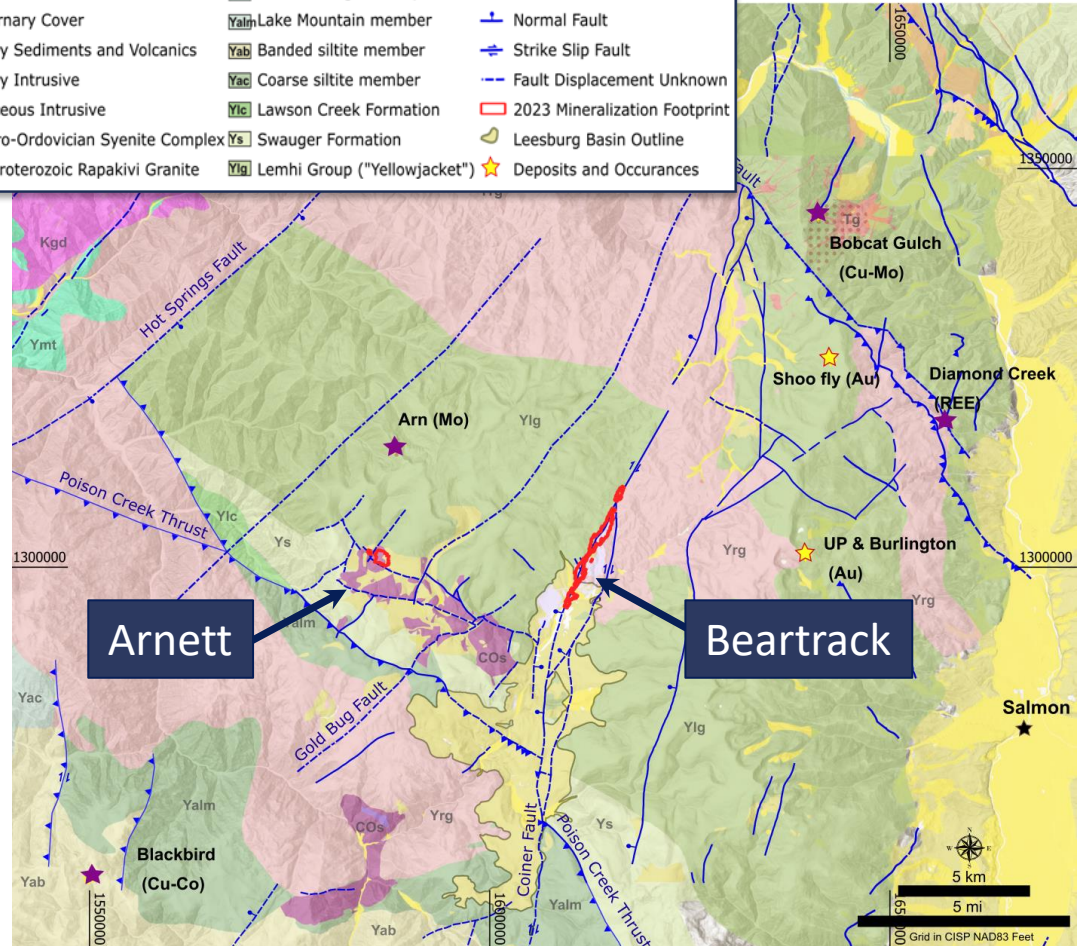
*Deformation zone in
rapakivi granite from
North Pit - Beartrack*

CENTRAL IDAHO GEOLOGY & OROGENIC GOLD



DISTRICT GEOLOGY

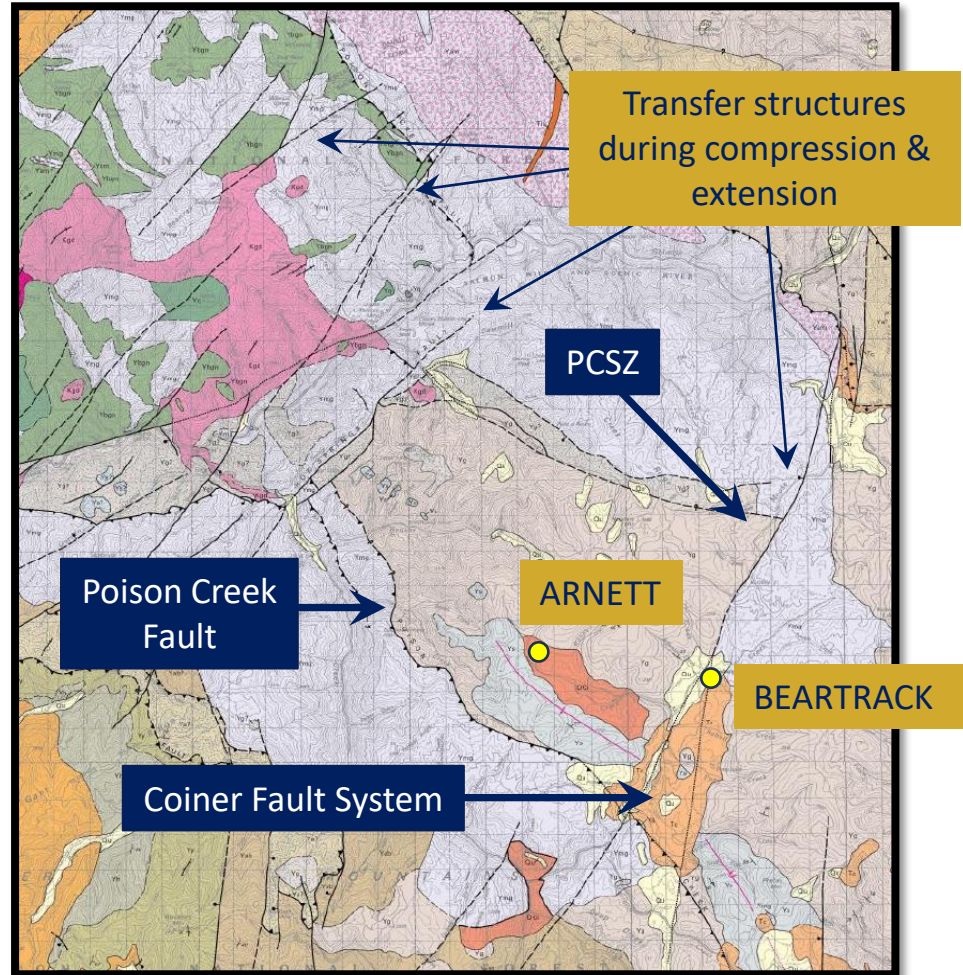
- **Mesoproterozoic metasedimentary & intrusive rocks**
- **Cambro-Ordovician intrusive complexes**
- **Eocene to Oligocene deposits**
 - Conglomerate, sandstone, shale w/ minor coal
 - Felsic to mafic flows & tuffs
 - Lake beds
- **Coiner Fault System & Poison Creek Fault**
- **Multiple intrusive & mineralizing events**
 - Proterozoic Yrg & Co Belt Deposits
 - Cambro-Ordovician intrusions
 - Mississippian (& Cretaceous) REE-Th
 - Cretaceous Idaho Batholith
 - Cretaceous-Paleocene orogenic Au
 - Tertiary intrusions, porphyry & epithermal



Sources: Revival Gold; Burmeister et al, 2023; Lewis et al, 2022; Evans and Green, 2003, Burmeister et al, 2016, Corona Gold

DISTRICT STRUCTURE

- Coiner Fault System has an approximate **strike length of 90 km (55 mi)**
- **PCSZ** - a NE-trending transfer structure related to regional thrust faulting or a bend in the Coiner Fault System?
- The **PCSZ** has a **long geologic history** exhibiting ductile through brittle, post-mineral deformation
- Pre-mineralization **dextral offset** on the PCSZ is at least 2,000 m; at the time of mineralization offset was **sinistral**
- Known orogenic Au occurrences in the area are located near the Coiner Fault System



PROPERTY STRUCTURE

- At least two periods of **ductile deformation** are present at Beartrack & Arnett
- Deformation became **progressively more brittle**; later brittle-ductile shears exploited early-formed ductile fabrics
- Early-formed permeability was important for initiating & controlling the subsequent evolution of permeability & fluid flow
- **Mineralization** in both areas formed **late in the deformation history** during **brittle-ductile & brittle** deformation



Beartrack

Mesoproterozoic Yellowjacket Fm



Arnett

Cambrian Crowded Porphyry

Davis, 2023, Structural geological review of the Beartrack Project and Arnett Project, Idaho; Report prepared on behalf of Revival Gold.

BEARTRACK

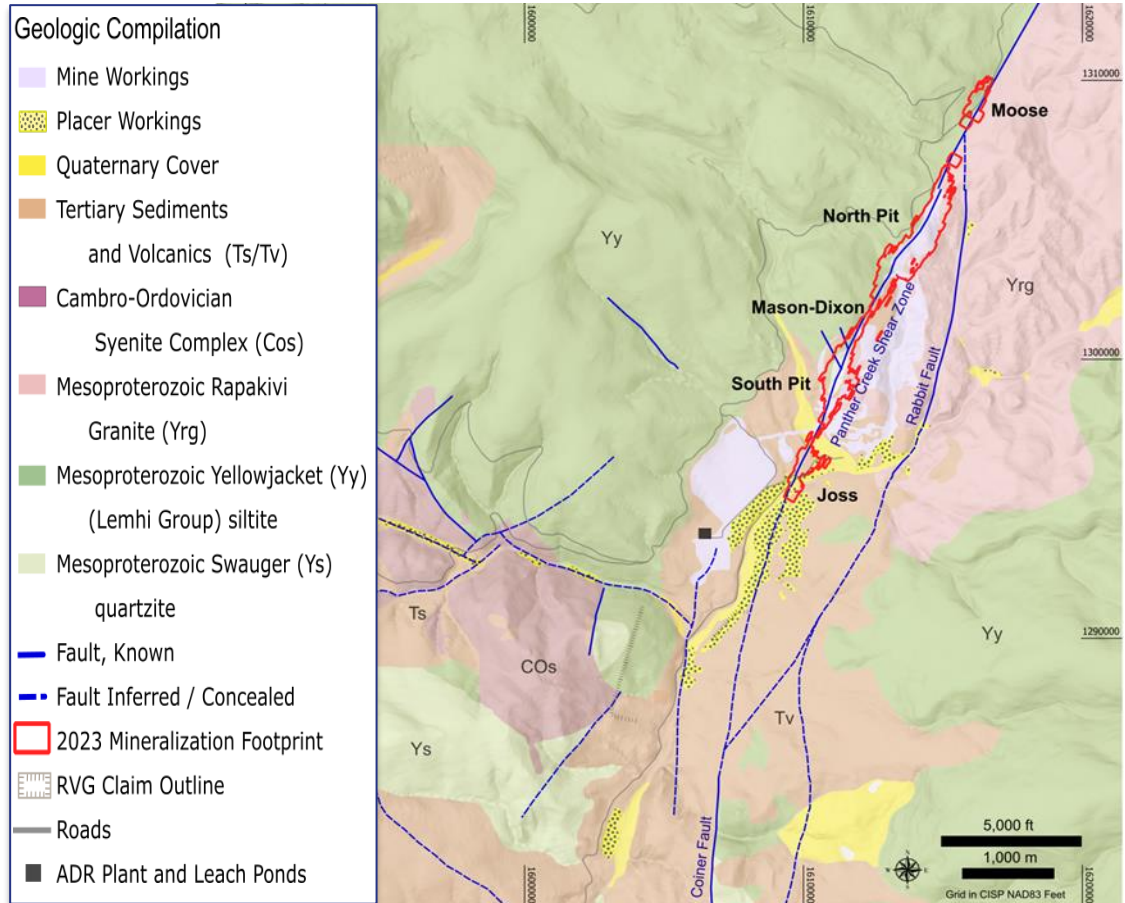


Joss Target

Panther Creek Shear

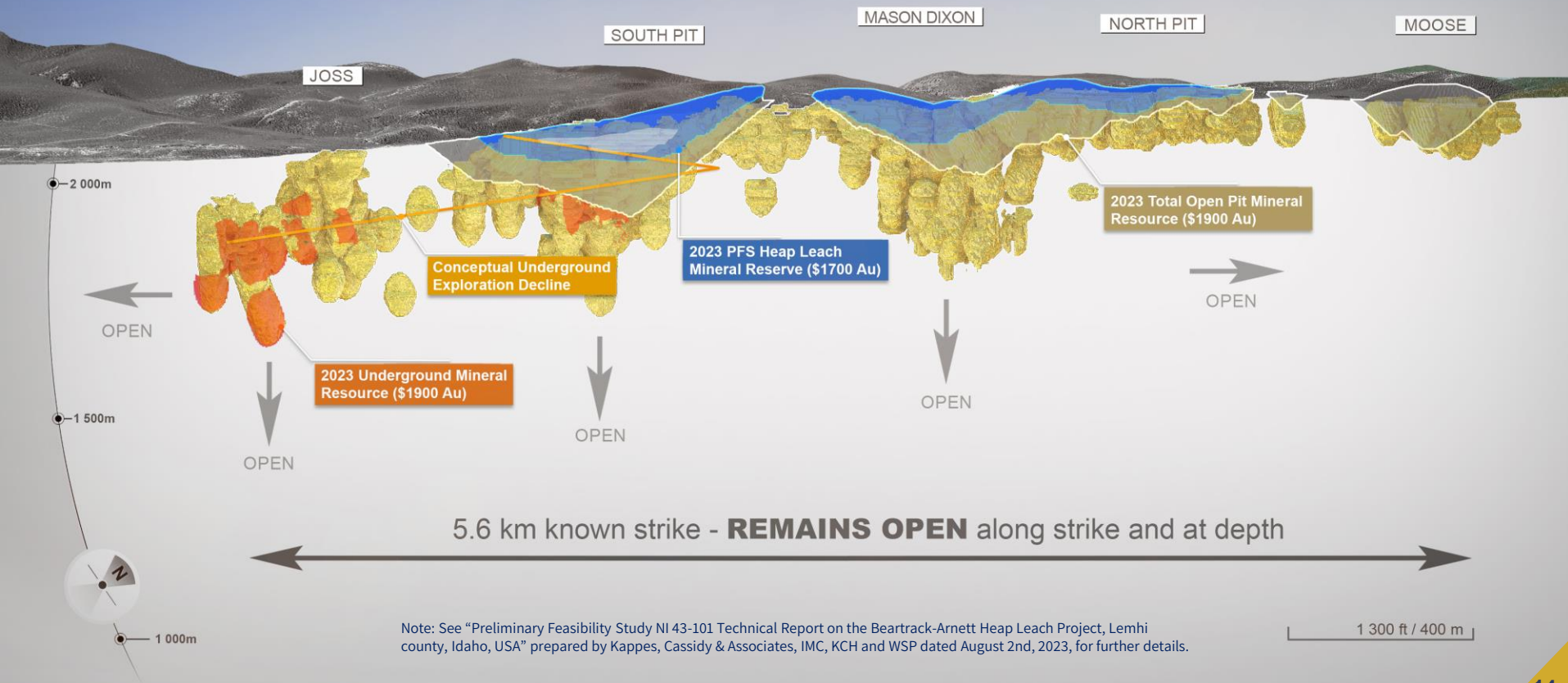
PROJECT GEOLOGY – BEARTRACK

- Hosted by Mesoproterozoic rocks
- Yrg in the north; Yy in the south
- Related to NNE-trending **PCSZ**
- Lateral & vertical continuity: five deposits over **5 km of strike & 750 m vertically**
- Mineralization: subvertical **stockwork** of **quartz-pyrite-arsenopyrite** veinlets; higher-grade tectonic breccias
- Alteration: sericitic, silicification, carbonate +/- K feldspar
- Geochemistry: Au & As +/- Hg
- Deposit Type: orogenic
- Age: 68.2+/-1.7 Ma (Re-Os from sulfides)

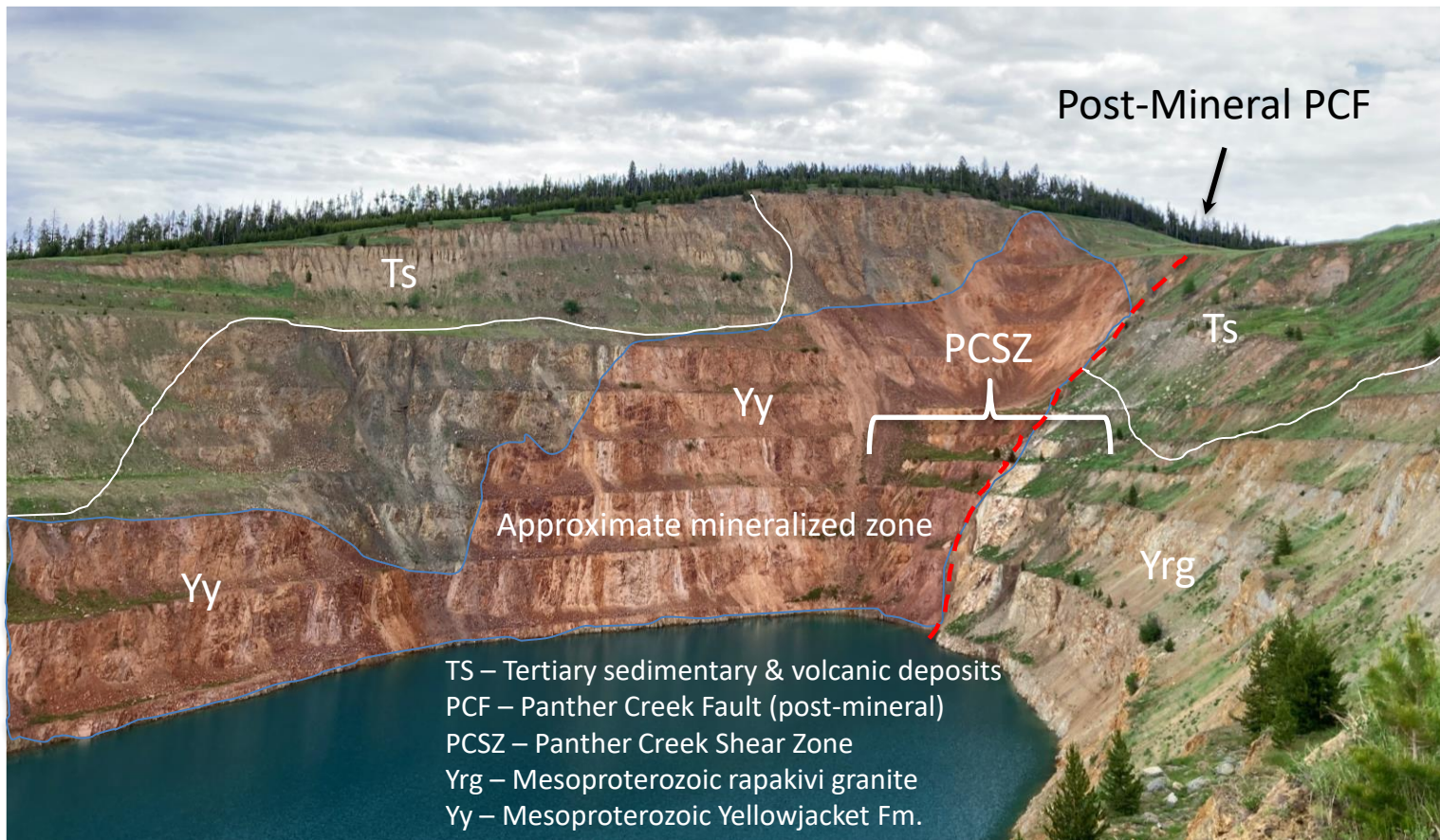


Source: Revival Gold; Meridian Gold; Lewis et al, 2022

BEARTRACK TREND – MINERALIZED OVER +5 KM



BEARTRACK SOUTH PIT-2022



BEARTRACK HOST ROCKS



Mesoproterozoic rapakivi granite



Mesoproterozoic metasedimentary rocks



BEARTRACK MINERALIZATION-Stockwork



Quartz-arsenopyrite-pyrite stockwork in Mesoproterozoic rapakivi granite



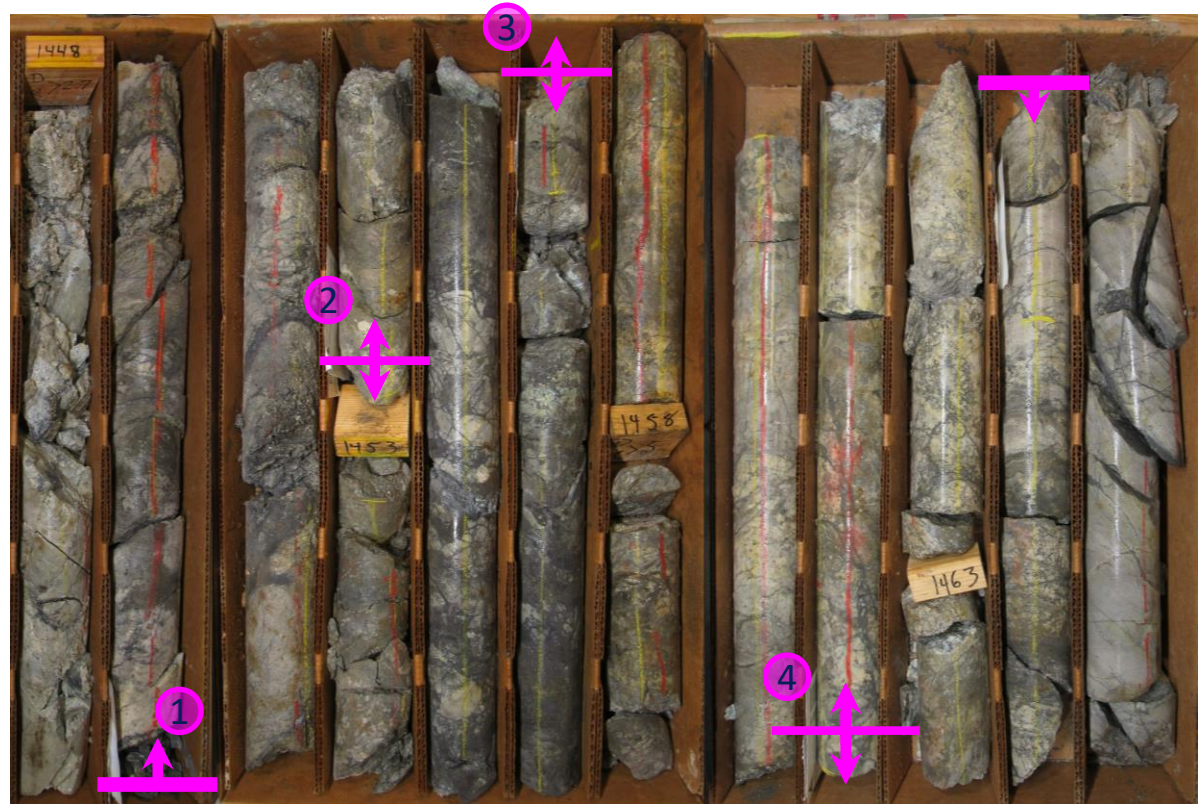
Quartz-arsenopyrite-pyrite stockwork in Mesoproterozoic metasedimentary rocks

JOSS UNDERGROUND TARGET – BT21-240D

- Photo depicts **18.9 g/t gold over 5.3 m¹** within 4.34 g/t gold over 110.6 m^{1,2}

- ① 1.5 m @ 12.0 g/t gold
- ② 1.2 m @ 28.9 g/t gold
- ③ 1.1 m @ 12.8 g/t gold
- ④ 1.5 m @ 22.3 g/t gold

¹Drilled width; ² See Revival Gold December 2nd, 2021, press release for detailed results.



PCSZ with high grade quartz-arsenopyrite-pyrite veinlets hosted in within brecciated Yellowjacket metasedimentary rock.

JOSS UNDERGROUND TARGET – BT22-242D

- Photo depicts **16.6 g/t gold over 4.5 m¹** within 3.5 g/t gold over 115.4 m^{1,2}

- ① 1.4 m @ 12.8 g/t Au
- ② 1.2 m @ 14.8 g/t Au
- ③ 1.1 m @ 18.8 g/t Au
- ④ 0.8 m @ 22.9 g/t Au

Note: ¹Drilled width; ² See Revival Gold September 22, 2022, news release for detailed results.



PCSZ with high grade quartz-arsenopyrite-pyrite veinlets hosted in within sheared Yellowjacket metasedimentary rock.

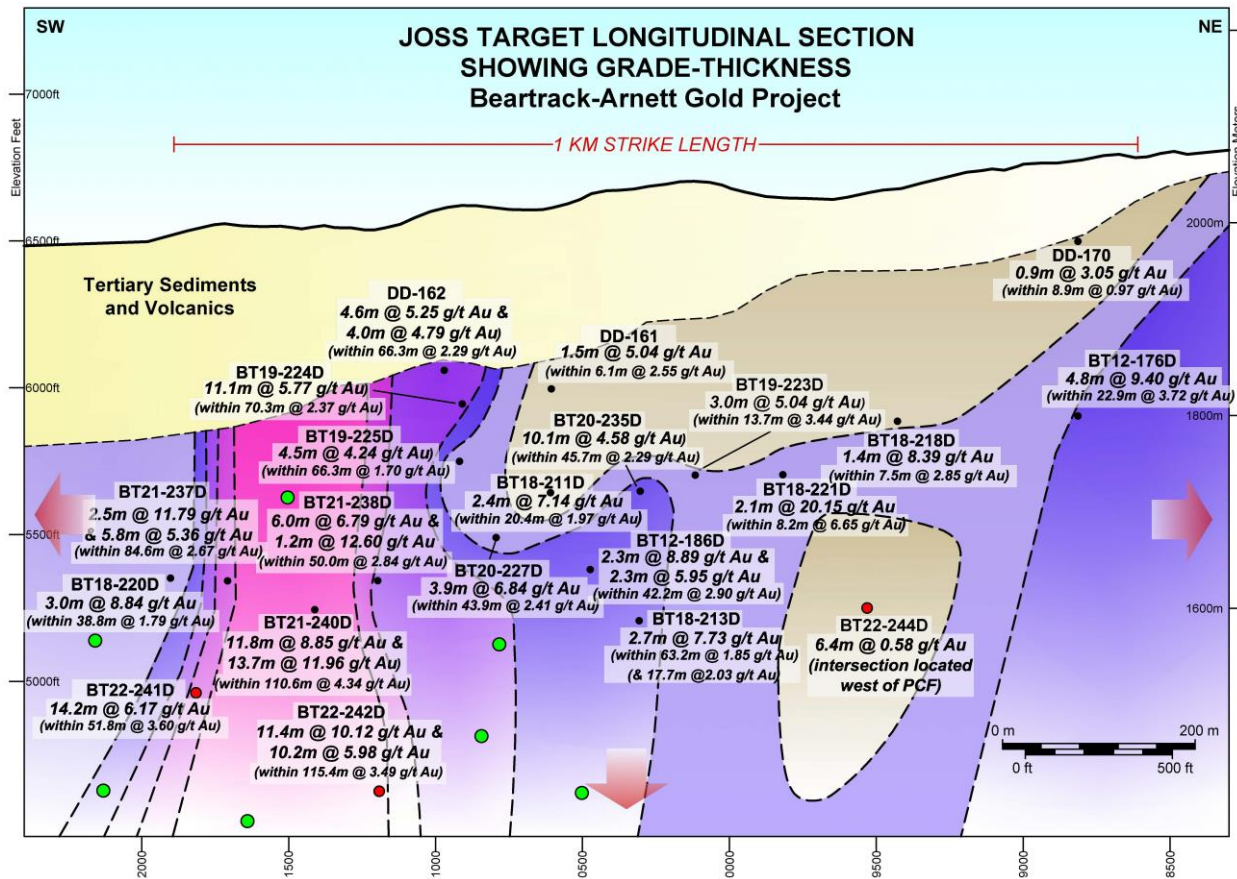
JOSS TARGET

- **1 km strike, 500 m vertical, high-grade core**, broad zone of surrounding mineralization
- Wide-spaced drilling
 - BT21-240D to BT22-242D is > 200 m
- Limits of shoot are defined by few holes
- Mineralization removed by faulting in some holes (e.g., DD-161, DD-170 & BT19-223D)

Average Intercept *

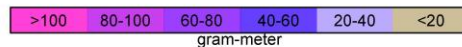
	Drilled Width (m)	Grade (g/t Au)
Bulk Domain	45.5	2.8
Incl. High-Grade Domain	5.50	7.7

*Arithmetic averages.



● Pierce Point of Panther Creek Shear Zone (PCSZ)

● 2022 drill hole pierce point (approximate intercepts)



BT18-220D Drillhole Number

3.0m @ 8.84 g/t Au Intercept

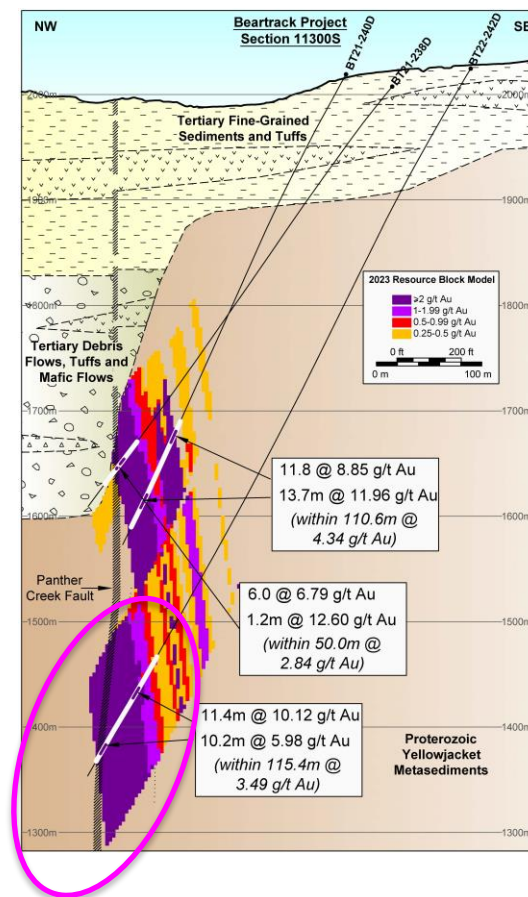
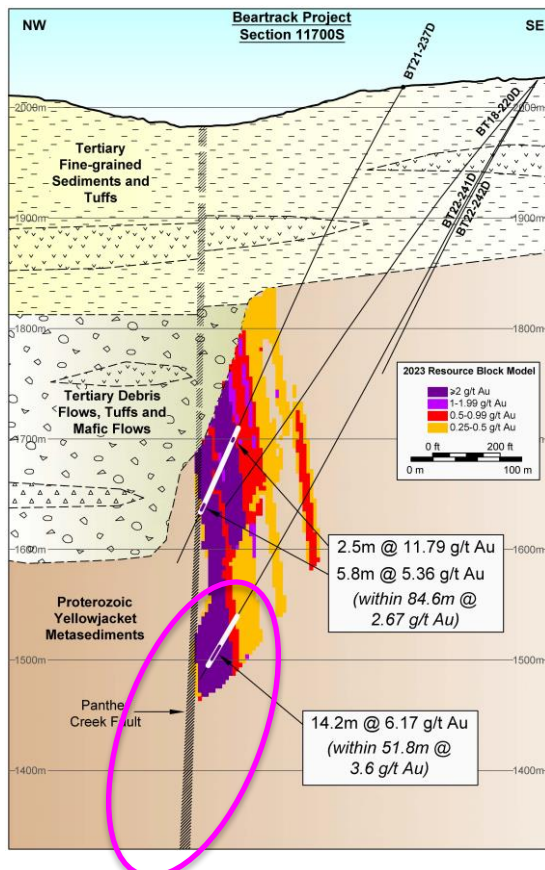
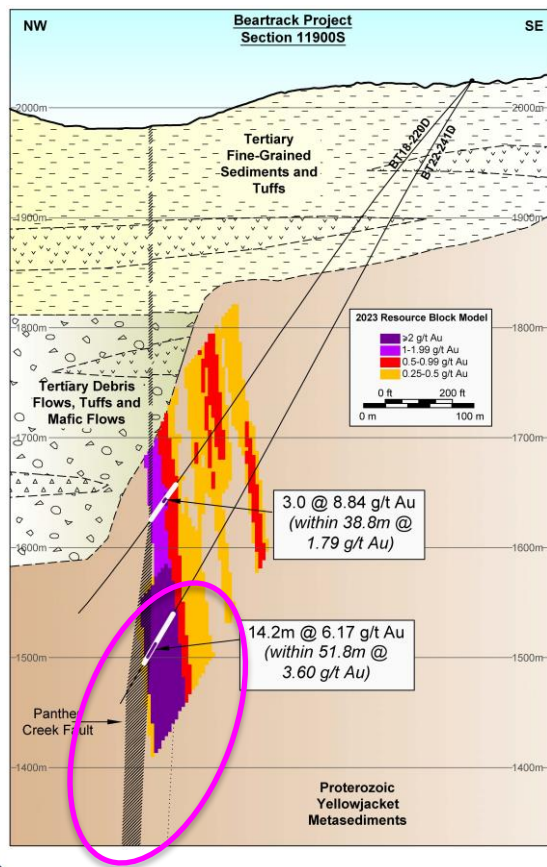
● Proposed drill hole pierce point

Mineralization in some drill holes truncated by post-mineral faulting.

Note: (1) see Revival Gold December 2nd, 2021, September 12th, 2022, September 22nd, 2022 and December 14th, 2022 press releases for further details.

December 2022

JOSS ZONE CROSS-SECTIONS



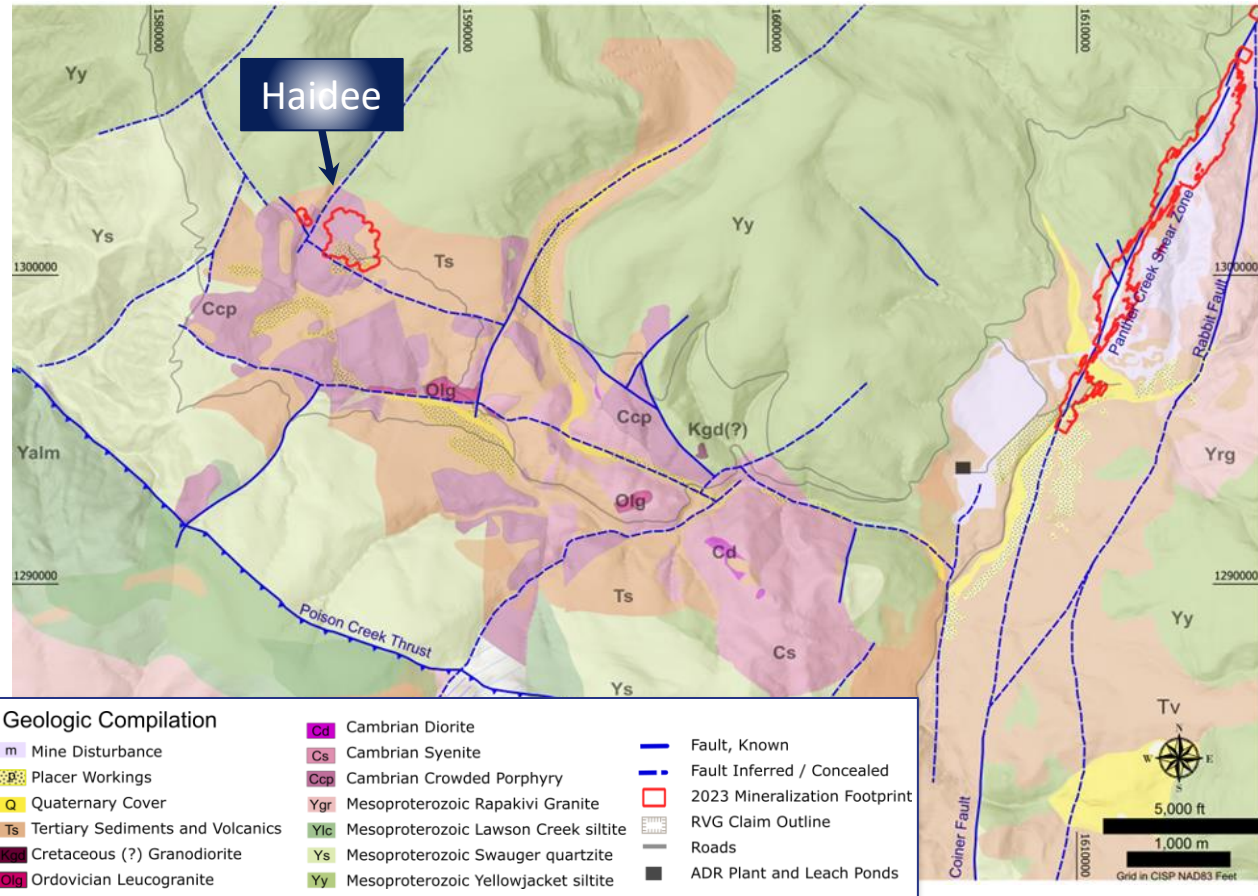
ARNETT

Haidee Deposit

*Beartrack ADR Plant
Site approx. 4 miles*

ARNETT – GEOLOGICAL CHARACTERISTICS

- Hosted by K-rich Cambro-Ordovician intrusive rocks
- Two sets of mineralized structures: NW-trending & NE-trending
- Mineralization: quartz-pyrite (FeOx) veinlets
- Oxidized to approximately 150 m
- Alteration: potassic (biotite +/- magnetite), magnetite, oxidation of magnetite to specular hematite, sericitic (+/- chlorite-epidote)
- Geochemistry: Au + Bi + Te +/- Ag, Cu, Fe, Hg, Mo, Sb, W
- Deposit Type – orogenic
- Age : 77-80 Ma (Ar^{40}/Ar^{39} from sericite)



ARNETT CAMBRO-ORDOVICIAN INTRUSIVE COMPLEX

Crowded Porphyry
 $489 \pm 5 \text{ Ma}^1$



Syenite
 $486 \pm 6 \text{ Ma}^2$



Leucogranite
 $477 \pm 3 \text{ Ma}^1$



HAIDEE MINERALIZATION



Haidee mine dump

Oxidized sulfides & Au are younger than quartz veining & occur in fractures & along vein margins

Quartz \pm FeOx veinlets parallel to & cross-cutting, structural fabric

Altered & deformed Crowded Porphyry

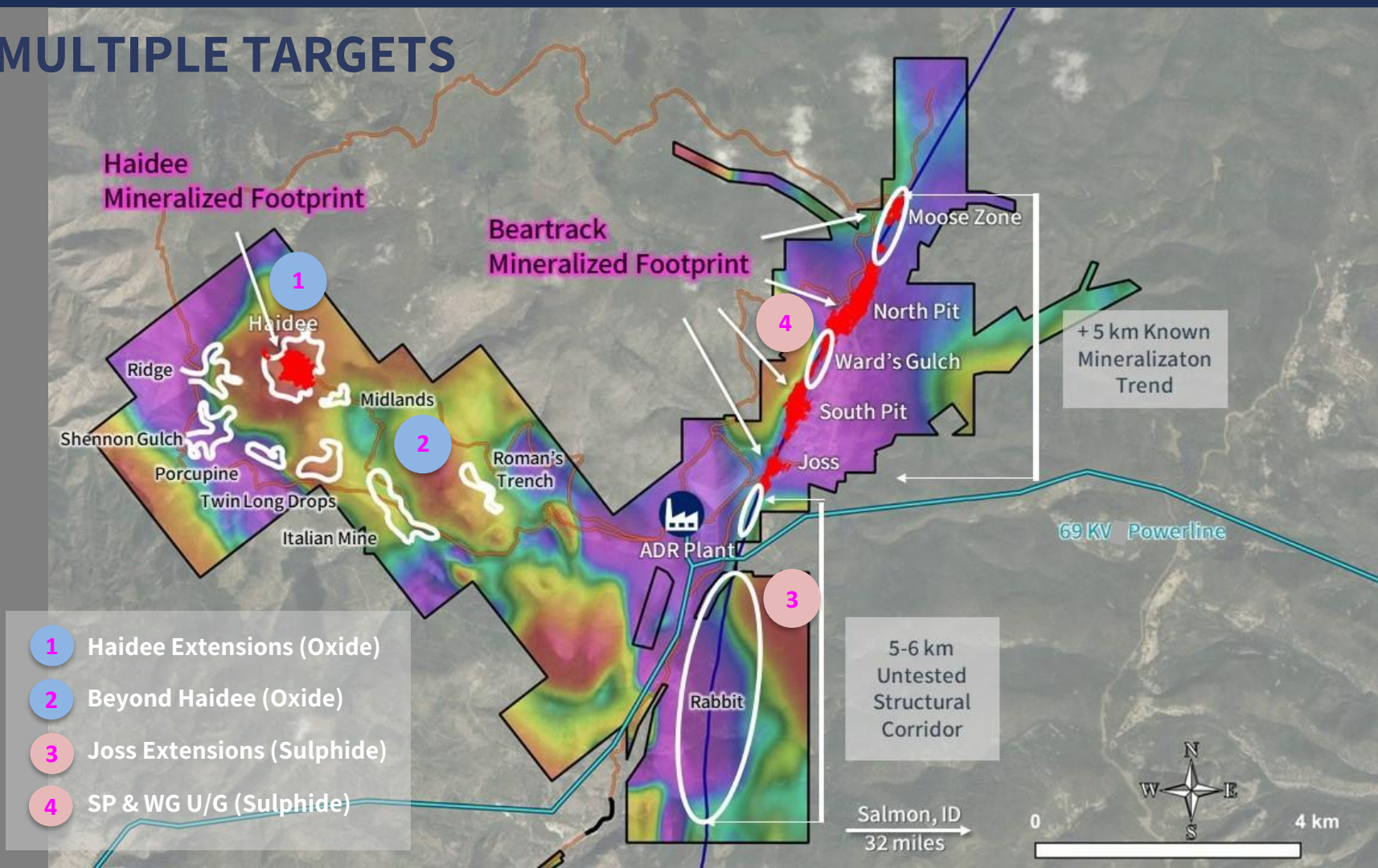


Haidee mine dump

EXPLORATION UPSIDE



MULTIPLE TARGETS



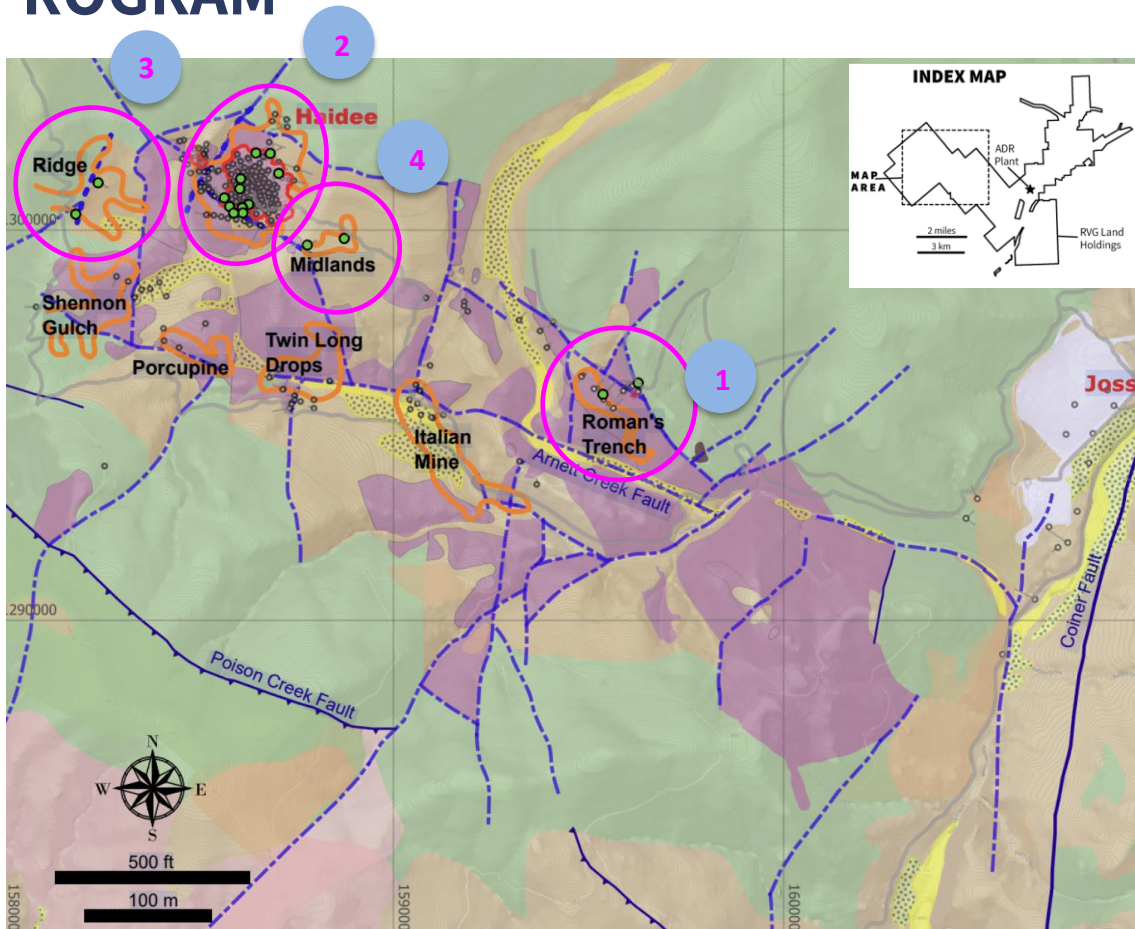
2023 DRILL PROGRAM

Focus on near-surface oxides

Four target areas:

- 1) Roman's Trench
- 2) Haidee
- 3) Ridge
- 4) Midlands

Note: See Revival Gold news release dated June 12th, 2023, for further details.



Drilling

- 2023 Collars
- 2023 Mineralization Footprint
- Btac All Drill Collars
- Btac All Traces
- Roads

Arnett Soils

- 0.3 ppb Au (ALS Global Ionic Leach)

Geologic Compilation

- Mine Workings
- Placer Workings
- Quaternary Cover
- Tertiary Sediments and Volcanics
- Cambro-Ordovician Syenite Complex
- Mesoproterozoic Rapakivi Granite
- Mesoproterozoic Sediments
- Fault, normal
- Fault, normal reactivated thrust
- Fault, oblique-slip right lateral
- Fault, unknown

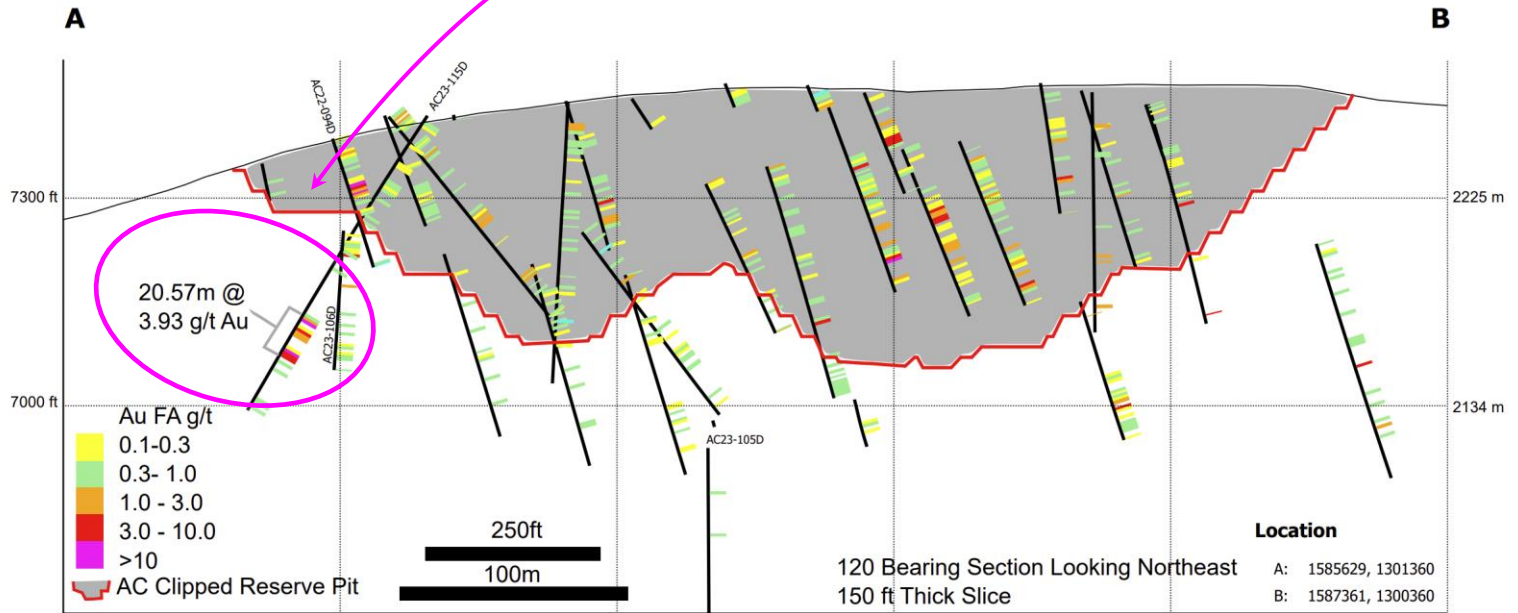
Draft BTAC Geologic Compilation
10/31/2023 - DWP
Mapping From Lewis et al. 2022 DWM-207
and Revival Gold Mapping
Grid in CISP NAD83 Feet

HAIDEE OXIDE GOLD DEPOSIT

Satellite
oxide gold
deposit –
open up
and down
dip

Note: See “Preliminary Feasibility Study NI 43-101 Technical Report on the Beartrack-Arnett Heap Leach Project, Lemhi county, Idaho, USA” prepared by Kappes, Cassidy & Associates, IMC, KCH and WSP dated August 2nd, 2023, and Revival Gold news release dated October 31st, 2023, for further details.

AC23-115D in oxides outside the current reserve pit shell



HAIDEE OXIDE GOLD DEPOSIT – AC23-115D

- Photo depicts **9.15 g/t gold over 4.3 m¹** within 3.93 g/t gold over 20.6 m^{1, 2}

- ① 1.3 m @ 14.75 g/t Au
- ② 1.4 m @ 3.82 g/t Au
- ③ 1.6 m @ 9.24 g/t Au

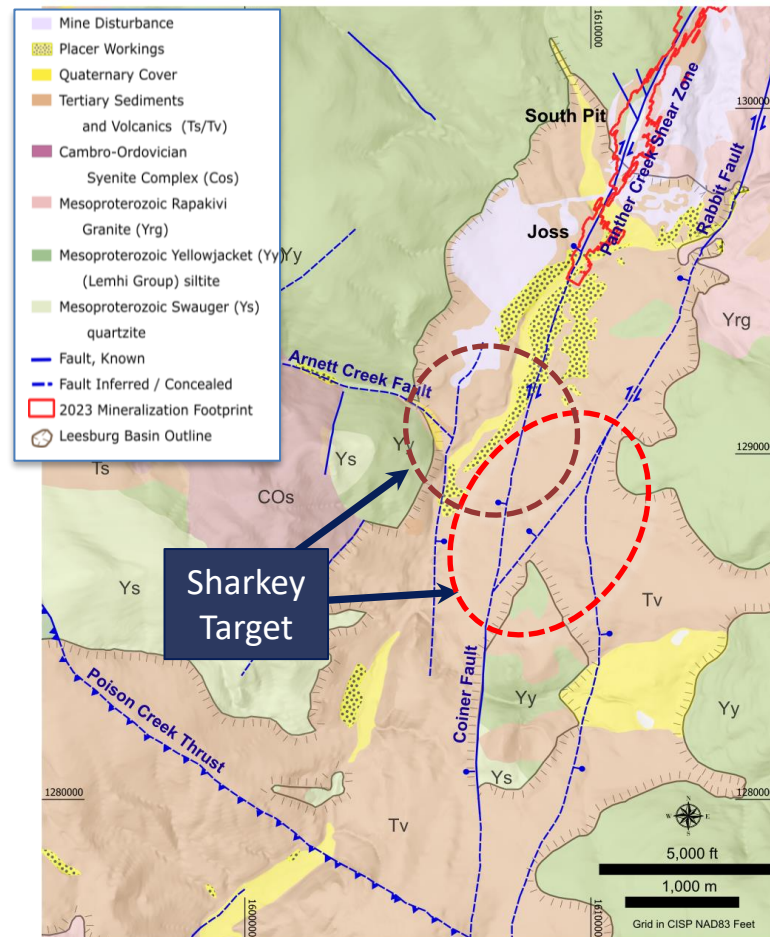
Note: ¹ Drilled width; ² See Revival Gold October 31, 2023, news release for detailed results



Qtz-iron oxide veinlets in faulted and brecciated Cambro-Ordovician Crowded Porphyry

BEATRACK EXPLORATION TARGETS

- **Sharkey Target:**
 - The PCSZ-Coiner Fault System may be a braided structure. Other structures in the fault system may also be mineralized (shown in red)
 - Projected intersection of the Arnett & Coiner Faults where a zone of enhanced pre-mineralization permeability is predicted (shown in dark red)
- **Rabbit Creek Fault:** Smith Gulch area, there is evidence to suggest that both faults may be mineralized.
- **Joss:** along strike to the south & at depth

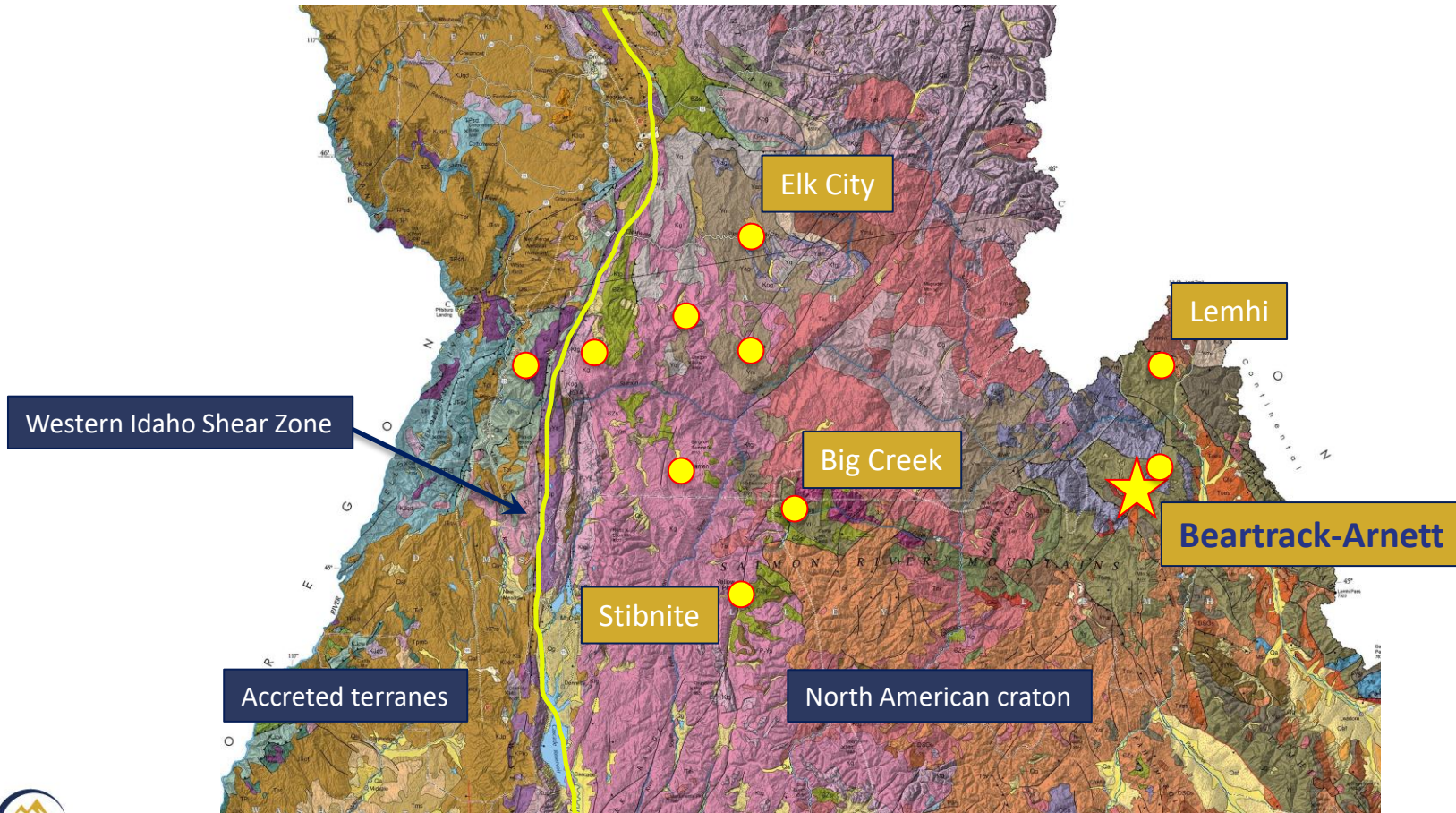


OROGENIC GOLD IN IDAHO



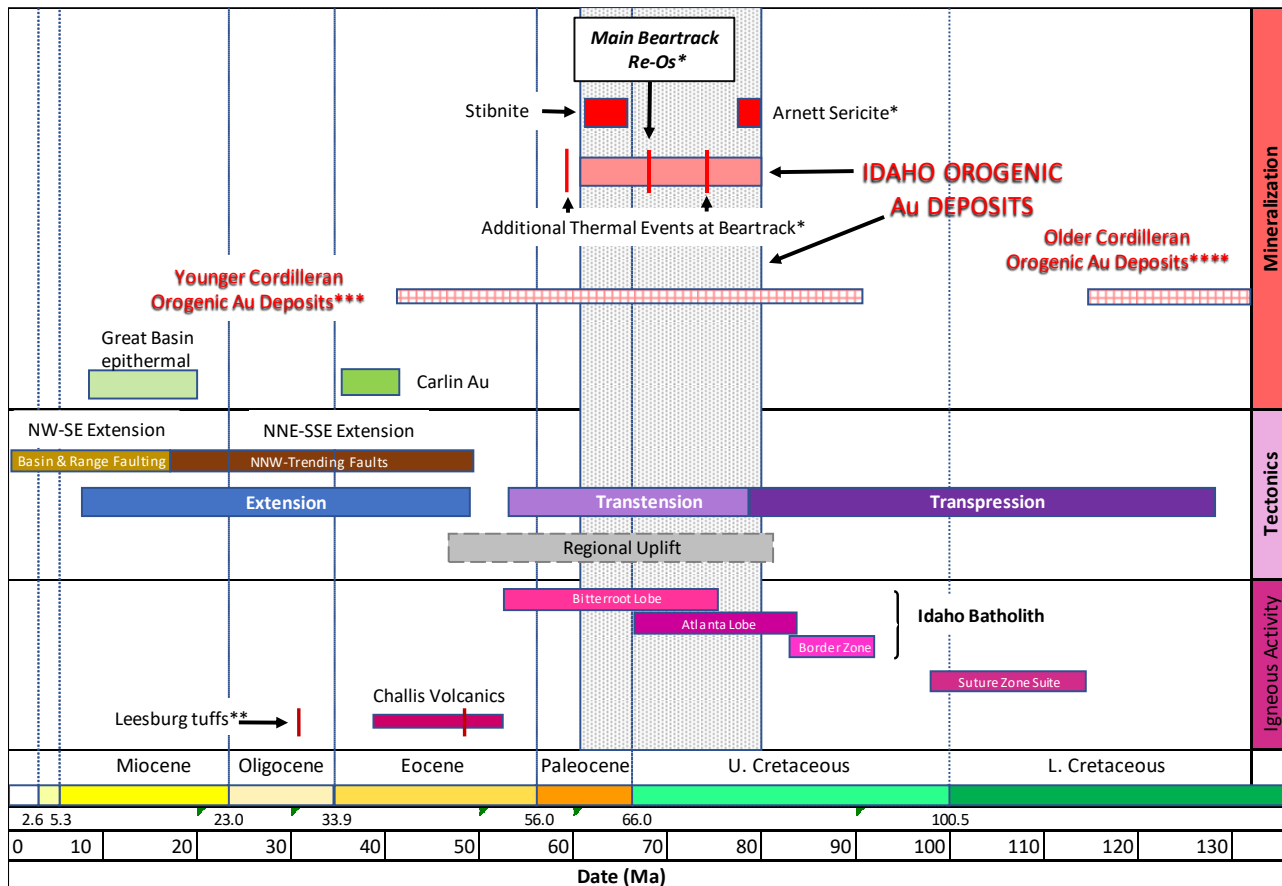
*Gold Bars from the
Beartrack Mine –
Produced by Meridian*

WESTERN IDAHO SHEAR ZONE & OROGENIC Au



REGIONAL GEOCHRONOLOGY

- Orogenic Au deposits in Idaho formed between 80 Ma & 61 Ma around the transition from transpression to transtension
- Orogenic Au deposits in Idaho formed during a period of regional uplift
- This coincides with the emplacement of the Idaho Batholith
- It also coincides broadly with the formation of other Cordilleran orogenic Au deposits



*Unpublished dates from Meridian/RVG

**Lewis et al., 2022. Geologic Map of the Jureano Mountain and Leesburg Quadrangles

***Beartrack, Stibnite, Chichagof, Juneau, Bralorne, Cargo Muchacho, Caborca, Baja

****Atlin, Klondike, Cassiar, Manson, Barkerville, Mother Lode

OROGENIC GOLD IDAHO-COMMON CHARACTERISTICS

- **Au-dominant deposits**
- Mineralization occurs near regional shear zones
- Mineralization formed **late** in the deformation sequence under **brittle-ductile to brittle conditions** (Beartrack-Arnett; other deposits unknown)
- Overall low-sulfide content; **Au** associated **with pyrite and/or arsenopyrite**, native Au present locally
- **Anomalous concentrations of As, Hg, W, Sb, Ag ± Bi, Te**
- **No vertical or horizontal** mineralogical or geochemical **zoning** over hundreds of meters
- Ubiquitous **quartz-sericite-pyrite alteration** in wall rocks
- **Carbonate as a gangue** or alteration mineral and/or **CO₂-rich fluid inclusions**
- Feldspar as a gangue and/or alteration mineral
- Abundant placer gold
- **Age dates consistent with other Cordilleran orogenic districts** (Juneau, Chichagof, Bridge River, Caborca)

BEARTRACK-ARNETT CONTRIBUTORS

Thanks to and all the folks past and present that contributed to our understanding of the project:

- Dan Pace
- Cameron Egan
- Mark Hawksworth
- Kent Turner
- Pete Blakeley
- Christine Johnson
- Brett Davis
- Tony Norman
- Rick Schur
- Don Birak



THANK YOU FOR YOUR TIME!





REVIVAL GOLD INC.

145 King St. W., Suite 2870
Toronto, Ontario
M5H 1J8

Steven T. Priesmeyer – VP Exploration
Dan Pace – Chief Geologist

info@revival-gold.com
416-366-4100

TSX-V: RVG
OTCQX: RVLGF

